

# 2 Tonne Reach Truck





## Capacity

At 600 mm load centre:  
**Model GRT 200E - 2000 kg**

## Standard Equipment

- Integral side shifting carriage reduces head length to give superior deration characteristics
- 3-phase AC motors for traction, hydraulics and steering guarantee high energy efficiency and maintenance-free operation
- Independent electronic controllers for traction, hydraulics and steering are integrated by CAN-Bus technology resulting in synchronized equipment control with high level of safety
- Speed-sensitive electric steering automatically slows the truck down to safe limits while turning
- Programmable turning ratio gives the operator superior control over truck maneuverability
- Ergonomic suspension seat, automotive style accelerator & brake pedals, and adjustable steering wheel ensure high level of operator comfort over long working hours
- Fingertip control for all hydraulic functions and travel direction is integrated for one-hand operation. This allows the operator to focus on handling the load
- Hydraulic rear wheel brakes assisted by electromagnetic and regenerative braking of drive wheel ensures precise control and stability
- Parking brake is electromagnetic and automatically operates when operator lifts the foot off the dead man's pedal
- Vulkollan load wheels and drive tyre give superior traction control with a higher tolerance to surface irregularities
- Clear view overhead guard offers better visibility of the load at heights

## Battery

- Battery can be pulled out of the chassis with the reach carriage to be lifted off or rolled out to one side (optional)
- 48V traction battery, offered in 540 and 700Ah capabilities to ensure optimum matching with different performance cycles, derated capacities and lift heights

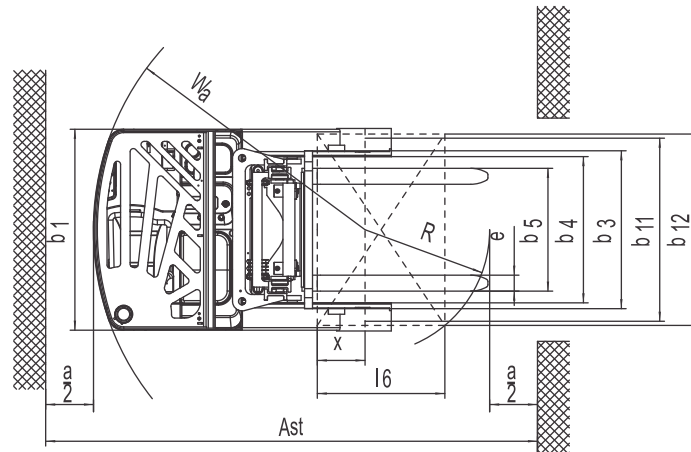
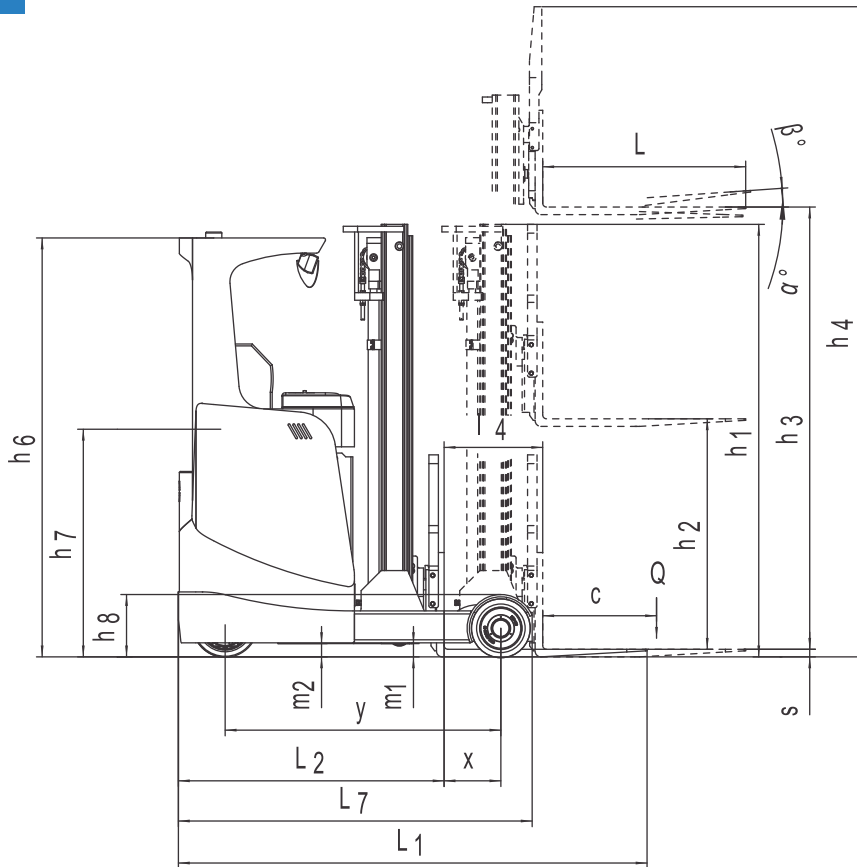
## Mast

- 3 stage full free lift mast with enhanced visibility ISO class 2A forks
- Unique nesting of mast sections with tight running clearances guarantees a robust and stable load handling system
- Hose burst valve prevents sudden lowering of load in case of hose failure





**Dimensions**



**Standard Offerings**

1. Rack height selection
2. Work light
3. Travel alarm
4. Flashing light
5. Rear view mirror
6. Tool kit

**Performance Enhancing Options**

1. Camera system with colour monitor
2. Freezer conditioning up to (-25°C)
3. Battery compartment rollers



## Electric Reach Truck 2T - GRT 200E

### Specifications

| Characteristics |  |                  |                       |
|-----------------|--|------------------|-----------------------|
| 1.1             | Manufacturer   |                  | Godrej                |
| 1.2             | Model designation  |                  | GRT 200E              |
| 1.3             | Drive unit   |                  | Battery               |
| 1.4             | Operator type  |                  | Seated                |
| 1.5             | Rated capacity   | Q                | t                     |
| 1.6             | Load centre distance   | c                | mm                    |
| 1.9             | Wheelbase  | y                | mm                    |
| Weights         |  |                  |                       |
| 2.1             | Service weight (include battery)   |                  | kg                    |
| 2.2             | Axle loading, fork advanced, unladen driving side/loading side (base configuration)  |                  | kg                    |
| 2.3             | Axle loading, fork retracted, unladen driving side/loading side (base configuration) |                  | kg                    |
| 2.4             | Axle loading, fork advanced, laden driving side/loading side (base configuration)    |                  | kg                    |
| 2.5             | Axle loading, fork retracted, laden driving side/loading side (base configuration)   |                  | kg                    |
| Wheels Chassis  |  |                  |                       |
| 3.1             | Tyre type driving wheels/loading wheel   |                  | Polyurethane          |
| 3.2             | Tyre size, driving wheels (diameter x width)   | mm               | 343 x 140             |
| 3.3             | Tyre size, loading wheels (diameter x width)   | mm               | 310 x 118/310 x 208** |
| 3.4             | Tyre size, caster wheels (diameter x width)  | mm               | NA/102 x 51**         |
| 3.5             | Wheels, number driving, caster/loading (x = drive wheels)                            |                  | 1 x 0/2   1 x 2/2**   |
| 3.6             | Track width, front, driving wheels   | mm               | 0                     |
| 3.7             | Track width, rear, loading wheels  | mm               | 1148 /1238**          |
| Dimensions      |  |                  |                       |
| 4.1             | Tilt of mast/fork carriage forward/backward  | $\alpha / \beta$ | °                     |
| 4.2             | Height, mast lowered   | $h_1$            | mm                    |
| 4.3             | Free lift (load backrest)  | $h_2$            | mm                    |
| 4.4             | Lift height  | $h_3$            | mm                    |
| 4.5             | Height, mast extended  | $h_4$            | mm                    |
| 4.7             | Height of overhead guard (cabin)   | $h_6$            | mm                    |
| 4.8             | Seat height/standing height  | $h_7$            | mm                    |
| 4.10            | Height of wheel arms   | $h_8$            | mm                    |
| 4.19            | Overall length (minimum)   | $l_1$            | mm                    |
| 4.20            | Length to face of forks  | $i_2$            | mm                    |
| 4.21            | Overall width  | $b1 / b2$        | mm                    |
| 4.22            | Fork dimensions  | $s/ e/l$         | mm                    |
| 4.23            | Fork carriage class/type A, B  |                  | A                     |
| 4.24            | Fork carriage width  | $b_3$            | mm                    |
| 4.25            | Distance between fork-arms   | $b_5$            | mm                    |
| 4.26            | Distance between wheel arms/loading surfaces   | $b_4$            | mm                    |
| 4.28            | Reach distance   | $i_4$            | mm                    |
| 4.31            | Ground clearance, laden below mast   | $m_1$            | mm                    |
| 4.32            | Ground clearance, centre of wheelbase  | $m_2$            | mm                    |
| 4.34.1          | Aisle width for pallets 1000 x 1200 crossways  | $A_{st}$         | mm                    |
| 4.34.2          | Aisle width for pallets 800 x 1200 crossways   | $A_{st}$         | mm                    |
| 4.35            | Turning radius   | $W_a$            | mm                    |
| 4.37            | Length across wheel arms (exclusive fork)  | $l_7$            | mm                    |
| Performance     |  |                  |                       |
| 5.1             | Travel speed, laden/unladen  |                  | Km/h                  |
| 5.2             | Lifting speed, laden/unladen   |                  | m/s                   |
| 5.3             | Lowering speed, laden/unladen  |                  | m/s                   |
| 5.4             | Reaching speed, laden/unladen  |                  | m/s                   |
| 5.8             | Max. gradeability, laden/unladen   |                  | %                     |
| 5.10            | Service brake type   |                  | Hydraulic             |
|                 | Park brake type  |                  | Electromagnetic       |
| Drive           |  |                  |                       |
| 6.1             | Drive motor rating S2 60 min   |                  | kW                    |
| 6.2             | Lift motor rating at S3 15%  |                  | kW                    |
| 6.3             | The maximum allowed battery size   |                  | mm                    |
| 6.4             | Battery voltage/nominal capacity K5  |                  | V/Ah                  |
| 6.5             | Battery weight   |                  | kg                    |
| Other           |  |                  |                       |
| 8.1             | Type of drive unit   |                  | AC                    |
| 10.5            | Steering type  |                  | Electronic            |
| 10.7            | Sound pressure level at the driver's ear   |                  | dB (A)                |

All dimensions and specifications are subject to variations within  $\pm 15\%$

- The parameters in the table are of the standard model. For more information please contact us.
- The parameters are subject to change without notice.

\*Refer mast data. \*\*For mast 10 m and above. \*\*\*For mast 9 m and above.



**Table 1: Mast Specifications**

| Model Description | Mast Type   | Base Load Capacity (kg) @ 600 mm Load Centre | MFH h3 (mm) | OAHL h1 (mm) | OAHR h4 (mm) | Free Lift h2 (mm) | Derated Capacity (kg) at MFH @ 600 mm Load Centre | Standard Battery Capacity (48 V) | Service Weight (including battery) kg |
|-------------------|-------------|--|-------------|--------------|--------------|-------------------|---|----------------------------------|---------------------------------------|
| GRT200E-40        | 3 STAGE CVM | 2000   | 4050        | 1980         | 5115         | 915               | 2000  | 540 Ah                           | 3245                                  |
| GRT200E-45        | 3 STAGE CVM | 2000   | 4500        | 2130         | 5565         | 1065              | 1900  | 540 Ah                           | 3295                                  |
| GRT200E-50        | 3 STAGE CVM | 2000   | 5000        | 2280         | 6065         | 1215              | 1800  | 540 Ah                           | 3345                                  |
| GRT200E-55        | 3 STAGE CVM | 2000   | 5500        | 2450         | 6565         | 1385              | 1700  | 540 Ah                           | 3395                                  |
| GRT200E-60        | 3 STAGE CVM | 2000   | 6000        | 2630         | 7065         | 1565              | 1600  | 540 Ah                           | 3445                                  |
| GRT200E-65        | 3 STAGE CVM | 2000   | 6500        | 2780         | 7565         | 1715              | 1500  | 540 Ah                           | 3495                                  |
| GRT200E-70        | 3 STAGE CVM | 2000   | 7000        | 3050         | 8065         | 1985              | 1400  | 540 Ah                           | 3545                                  |
| GRT200E-75        | 3 STAGE CVM | 2000   | 7500        | 3220         | 8565         | 2155              | 1300  | 540 Ah                           | 3595                                  |
| GRT200E-80        | 3 STAGE CVM | 2000   | 8000        | 3390         | 9065         | 2325              | 1200  | 540 Ah                           | 3875                                  |
| GRT200E-85        | 3 STAGE CVM | 2000   | 8500        | 3610         | 9565         | 2545              | 1100  | 540 Ah                           | 3930                                  |
| GRT200E-90        | 3 STAGE CVM | 2000   | 9000        | 3770         | 10065        | 2705              | 1000  | 540 Ah                           | 3985                                  |
| GRT200E-95        | 3 STAGE CVM | 2000   | 9500        | 3940         | 10565        | 2875              | 900   | 700 Ah                           | 4290                                  |
| GRT200E-100       | 3 STAGE CVM | 2000   | 10000       | 4160         | 11065        | 3095              | 800   | 700 Ah                           | 4820                                  |
| GRT200E-105       | 3 STAGE CVM | 2000   | 10500       | 4330         | 11565        | 3265              | 700   | 700 Ah                           | 4880                                  |
| GRT200E-110       | 3 STAGE CVM | 2000   | 11000       | 4490         | 12065        | 3425              | 600   | 700 Ah                           | 4940                                  |

All dimensions and specifications are subject to variations within ± 15%  
\*h2 and h4 with load back rest

**Table 2: Dimensions (mm)**

| With Side Shift                                 | GRT200E               |                            |                            |
|---|-----------------------|----------------------------|----------------------------|
| Mast style                                      | 3-stage mast          | 3-stage mast               | 3-stage mast               |
| Lift height (h <sub>3</sub> )                   | h <sub>3</sub> ≤ 7.5m | 8m ≤ h <sub>3</sub> ≤ 9.5m | 10m ≤ h <sub>3</sub> ≤ 11m |
| Wheelbase                                       | y                     | 1524                       | 1594                       |
| Overall length (minimum)                        | l <sub>1</sub>        | 2568                       | 2573                       |
| Length to face of forks                         | l <sub>2</sub>        | 1498                       | 1503                       |
| Reach distance                                  | l <sub>4</sub>        | 490                        | 555                        |
| Aisle width for pallets 800 mm W x 1000 mm L    | Ast                   | 2800                       | 2815                       |
| Aisle width for pallets 1000 mm W x 1000 mm L   | Ast                   | 2857                       | 2875                       |
| Aisle width for pallets 1000 mm W x 1200 mm L   | Ast                   | 3024                       | 3037                       |
| Aisle width for pallets 1200 mm W x 1000 mm L   | Ast                   | 2913                       | 2934                       |
| Aisle width for pallets 1200 mm (W) x 1200 mm L | Ast                   | 3077                       | 3095                       |
| Turning radius                                  | W <sub>a</sub>        | 1770                       | 1840                       |
| Length across wheel arms (exclusive of fork)    | l <sub>7</sub>        | 1935                       | 2005                       |



**COMFORTABLE LEGROOM**



**INTERACTIVE DISPLAY**



**EASE OF SERVICE ACCESSIBILITY**



**Our Range**



3-wheel Electric Forklifts  
0.8 to 1.6 tonne



Electric Forklifts  
1 to 5 tonne



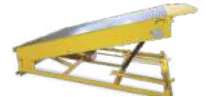
Diesel Forklifts  
1.5 to 4 tonne



Diesel Forklifts  
5 to 10 tonne



Diesel Forklifts  
12 to 25 tonne



Dock Leveler  
9 and 12 tonne



Hand Pallet Truck  
2.5 tonne



Powered Pallet Truck  
1.5 and 2 tonne



Electric Stacker  
1.2 and 1.5 tonne



Articulated Forklifts  
1.2 to 2 tonne



Platform Truck  
2, 3, and 4 tonne



Tow Truck  
2, 5 and 6 tonne  
(Stand up & sit down model)



**CROWN**  
Warehousing  
Equipment



**KOMATSU**  
Forklifts



**TENNANT**  
Industrial Cleaning  
Equipment



**HUBTEX**  
Side Loaders



**MERLO**



**IMER**  
GROUP

**DISTRIBUTION:** Our network of 17 company owned branches brings us closer to customers across India. This also gives us the edge to distribute equipment from global giants including Crown, Komatsu, Merlo, Tennant, Hubtex and Imer in India.

**GODREJ & BOYCE MFG. CO. LTD.**

Plant 16, Pirojshanagar, Vikhroli, Mumbai 400079.  
• Tel: +91 22 6796 4660/ 73 • Fax: +91 22 6796 1519  
• E-mail: mhemktg@godrej.com • URL: http://godrejmh.in

**Overseas Branch and Service Centre**

SAIF Zone, R O. Box 8549, Sharjah, U.A.E.  
• Tel: +971 55 8992305/ 2316 • Mob: 00 971 504629701  
• Fax: 00 971 65570966 • E-mail: mahesh@godrej.ae

**Branches & Service Centres**

- Mumbai: 022 67961725 / 67961291
- Pune: 020 66255121-22
- Ahmedabad: 079 66060646 / 66060701 / 66060606
- Indore: 0731 4069335/ 2532917
- Chennai: 044 66544431-32
- Bangalore: 080 66472251
- Kochi: 0484 6612777/ 6612609
- Hyderabad: 040 66431203
- Vizag: 0891 2517930 / 2746511-2-3

- Delhi: 011 66507340/ 50
- Chandigarh: 0172 5012525 / 5037738
- Jaipur: 0141 6701441/ 2
- Lucknow: 0522 6754961
- Kolkata: 033 66013771-75
- Bhubaneshwar: 0674 2374626
- Coimbatore: 0422 2545799/ 599
- Guwahati: 03612 468242
- Raipur: 07716606706

To find out more about what's new at Godrej Material Handling, check out [www.godrejmh.in](http://www.godrejmh.in)

